



Exterior of the school



Saga International Balloon Fiesta

Saga Language Center Application Guide

The Appeal of Saga

Saga City was selected as the No. 1 "Comfortable city to live in" in all of Japan. The city is known for its low cost of living, including rent and cost of living, and a high level of satisfaction with the quality of life. It is an internationally diverse city where foreigners feel integrated into the community.

The city is located just 40 minutes by train from Fukuoka City, the center of Kyushu. The Saga International Balloon Fiesta is held every year in November, attracting many tourists every year. It is also a city where old Japanese culture is still alive, with historic castle ruins and shrines.



View from Saga Prefectural Government Office
(3min on foot from the school)



Saga Shrine (3 min on foot from the school)



Saga Castle Ruins
(10min on foot from the school)



Saga Balloon Fiesta
held once a year

Reasons to Choose Saga Language Center



Comfortable city
to live in Japan

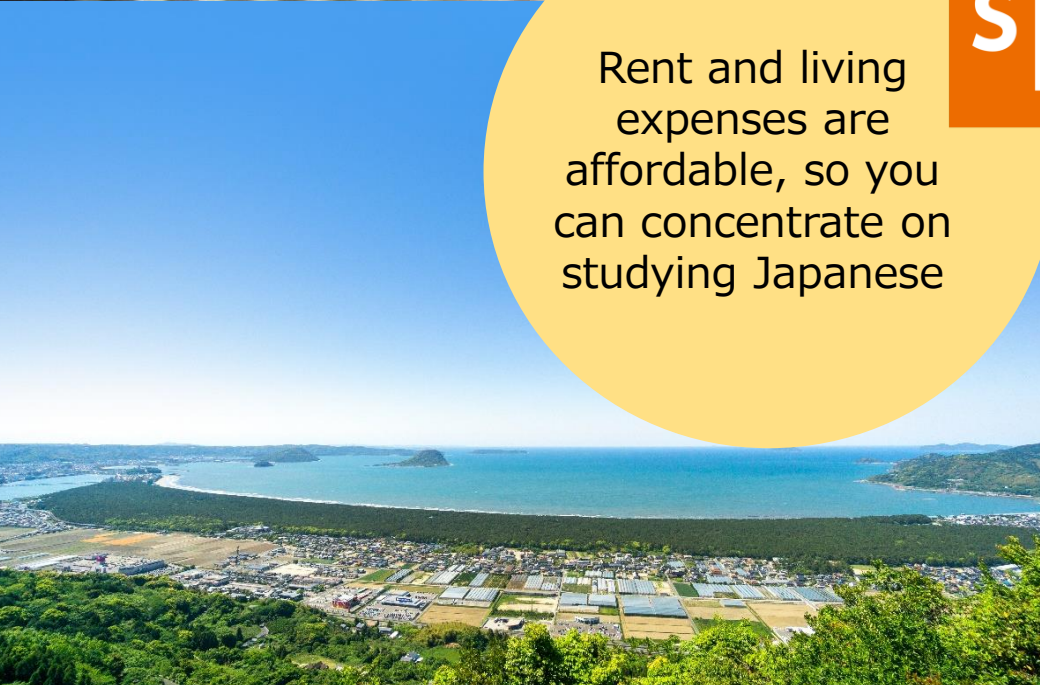
NO.1

*Private
Investigation



Rent and living
expenses are
affordable, so you
can concentrate on
studying Japanese

40 minutes by train
from Fukuoka, the
fifth largest city in
Japan



Saga Language Center's Facilities



School Entrance



Corridor



Library



Class Room



Staff Room



Parking area for bicycles

The Area around Saga Language Center



Saga Prefectural Government Office



Library



Saga Castle Ruins



Supermarket



100yen Shop



Shopping Mall

Japanese cultural experiences and activities



Japanese cooking classes



School field trip



Sports festival



**Interacting with the
local people**



Speech contest



**Kimono
Experience**

Saga is a Comfortable and Affordable Place to Live

【Example of room】 *The school does not have dormitories

Rent	For room sharing with 2-3 people: Approximately 20,000 to 30,000 yen per month.
	For living alone: Approximately 40,000 to 50,000 yen per month.
Deposit・Key money	Depending on the property
Distance to school	10 to 40 minutes walk
Initial cost	About 50,000yen~100,000yen

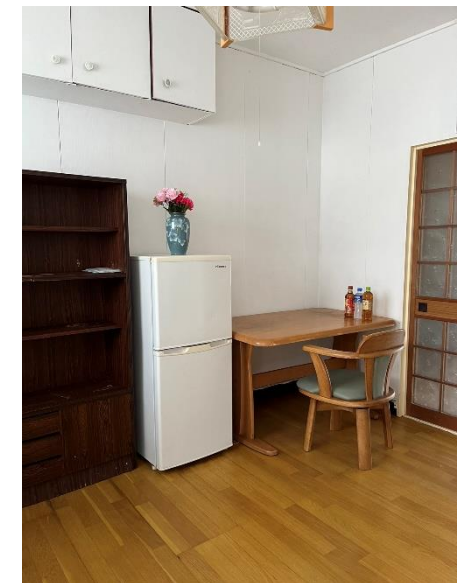
◆Furniture and appliances included
(refrigerator, microwave, washing machine, gas stove, or IH stove)

*Please note that rent varies depending on the property.

【Estimated cost of living per month】

Rent	About 20,000yen~50,000yen
Water and utilities	About 5,000yen~10,000yen
Food, etc.	20,000yen
Communication expenses	10,000yen
	About 55,000yen~90,000yen

*Please note that the cost of living differs for each individual.



Type of Part-time Jobs

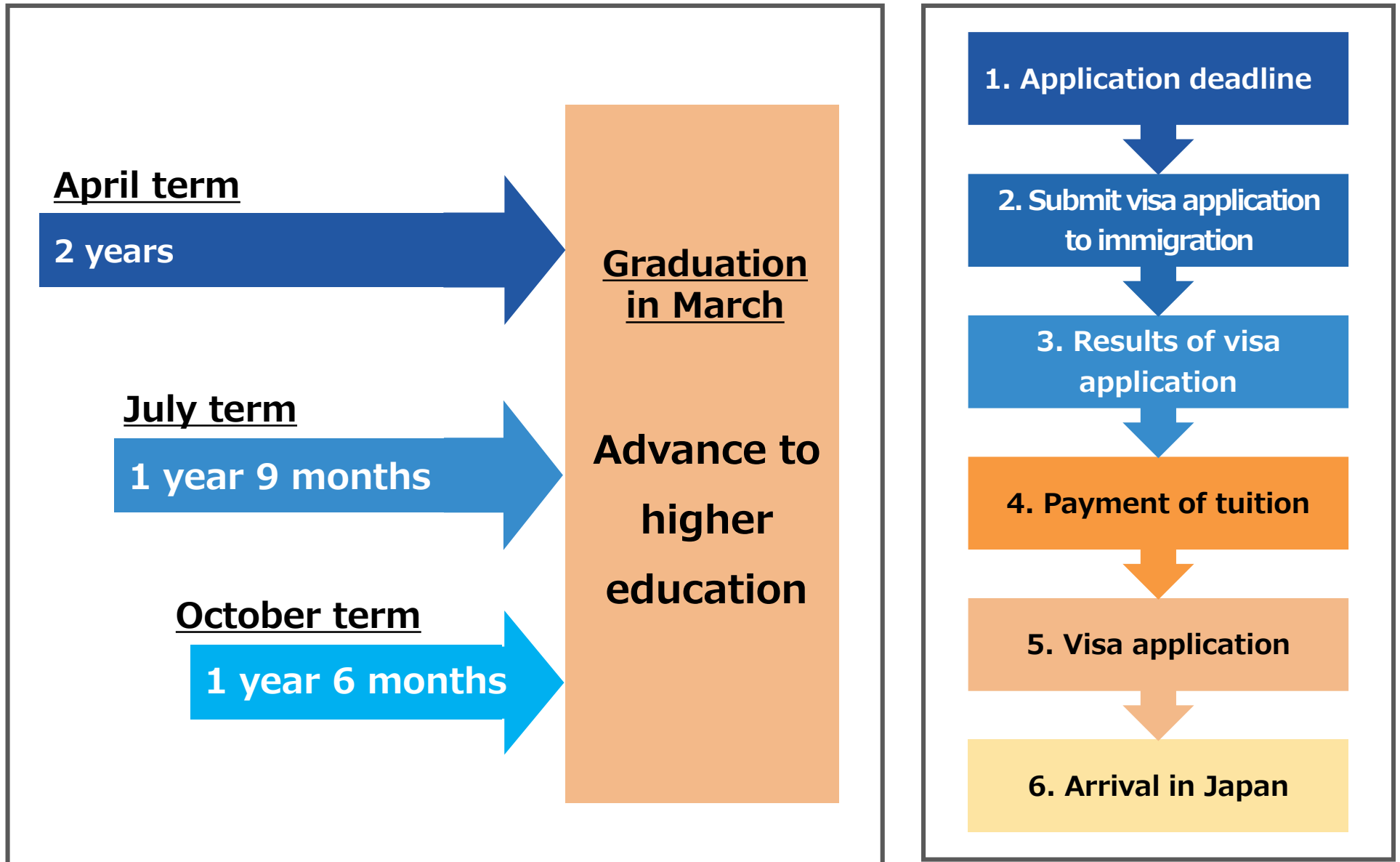
International students are allowed to work part-time only if they have “Permission to engage in activities other than those permitted under the status of residence”. You are not allowed to work more than 28 hours per week or 40 hours per week(8 hours per day or less) during long vacations. Please be sure to follow the rules.



Minimum hourly wage in Saga	¥ 956
Monthly earnings	¥ 95,600 ※Calculated as 25 hours per week, 100 hours per month.
Work place	Description
Food factory	Assisting in the production of snacks and prepared foods.
Convenience store	Cashier
Fast food restaurant	Cooking assistance
Restaurant	Cooking assistance

Part-time hourly wages in Saga range from about ¥ 956~ ¥ 1,100.
The work varies depending on your Japanese language ability.

Admission Schedule and Procedures



It takes about 5-6 months from the time of application to arrival in Japan

About the Preparation Course

2 Years Preparation Course (Enrollment Period: April)

【Eligible Applicants】 We accept applicants who have studied Japanese for more than 150 hours or N5 level of the Japanese Language Proficiency Test.

【Outline】 This course is designed to progress from Beginner (I & II), Pre-Intermediate, Intermediate, and Advanced levels and to be able to express own opinions fluently from familiar topics to abstract social topics such as politics, economics, and the environment even though that is not the area of specialization.

【Goal】 This course is designed to obtain JLPT N1 and mainly to enter university.

1 Year and 9 Months Preparation Course (Enrollment Period: July)

【Eligible Applicants】 We accept applicants who have studied Japanese for more than 150 hours or N5 level of the Japanese Language Proficiency Test.

【Outline】 This course is designed to progress from Beginner (I & II), Pre-Intermediate, Intermediate, and Advanced levels and to be able to express own opinions even though getting support from others on topics from familiar topics to social abstract topics such as politics, economics, and the environment in the areas which are interested in.

【Goal】 This course is designed to obtain JLPT N1 or N2 and enter a university or a vocational school.

1 Year and 6 Months Preparation Course (Enrollment Period: October)

【Eligible Applicants】 We accept applicants who have studied Japanese for more than 150 hours or N5 level of the Japanese Language Proficiency Test.

【Outline】 This course is designed to progress from Beginner (I & II), Pre-Intermediate, Intermediate, and Advanced levels, and to be able to express own simple opinions with the support of others on topics such as general social issues which are often discussed.

【Goal】 This course is designed to obtain JLPT N2 and mainly to enter a vocational school.

【Scope of our EJU preparation】 (No additional fee)

- General guidance for EJU
- Instruction in Japanese as a Foreign Language
- Mock examinations (Japanese as a Foreign Language, Japan and the World, Mathematics, and Science).

*We do not provide teaching in Japan and the World, Mathematics, and Science.

Class Schedule *You will take either AM or PM classes	AM	9:00~9:45	9:55~10:40	10:50~11:35	11:45~12:30
	PM	13:10~13:55	14:05~14:50	15:00~15:45	15:55~16:40

Admission Requirements

To be eligible for admission to the school, applicants must meet all of the following conditions.

1. Those who have completed at least 12 years of school education or equivalent in their home country.
2. Age of 18 years or older
3. Those who have been granted permission to enter Japan or are expected to be granted permission through proper procedures.
4. Those who have a financial supporter guarantee their tuition and living expenses when they are enrolled in school.
5. Those who have a reliable guarantor.
6. Those who are in sufficiently good health to continue their studies. •Those who have passed the interview conducted by the school (Interview might be conducted online).
7. Those who have completed at least 150 hours of Japanese language study and have Japanese language skills equivalent to JLPT N5 or higher.
8. Those who have passed the interview conducted by our school (which may be conducted online).

About Tuition

Course duration	2 years	1 year and 9 months	1 year and 6 months
Admission	April	July	October
Application fee	30,600	30,600	30,600
Enrollment fee	66,000	66,000	66,000
Tuition fee	1,254,000	1,097,300	940,500
Textbooks	44,000	38,500	33,000
Health check fee	4,000	4,000	4,000
Total	1,398,600	1,236,400	1,074,100

Payment Period : After the Certificate of Eligibility is issued, please pay the tuition fee by the designated date.

Payment Method: Please pay by bank transfer to the bank account designated by the school.

Refunds of tuition fees will be handled in accordance with the school's refund policy.

For more information, please contact the school.

Scholarships and Incentives

At Saga Language Center, we have various scholarships and incentives to support our students while studying Japanese!

Description	Amount
● Passing level N1 of the Japanese Language Proficiency Test	¥ 10,000
● Passing level N2 of the Japanese Language Proficiency Test	¥ 5,000
● High EJU exam score *250/400 or above	¥ 5,000
● Scholarship for outstanding academic performance (JASSO) *limited to 1 student enrolled in the April (2 years course)	¥ 30,000/month
● Financial incentive From the students graduating in March, we will select the most outstanding students with the best evaluation for attendance rate, attitude in class, and grades (1 student per class)	¥ 20,000
● Speech contest *top three students in the speech contest held at the closing ceremony)	¥ 10,000, ¥ 7,000, ¥ 5,000
● Kanji contest (students with scores of 80 points and above)	Certificate and prize

Message from Our Students



KHALAL
(Nepal)

School life is fulfilling, and I am growing through new friends and experiences. Teachers are introducing me to new things, and students are strengthening their bonds through various activities. Saga is a wonderful place surrounded by nature. There are plenty of places for shopping, convenient transportation, and I am very satisfied.



ZAW
(Myanmar)

The teachers are very polite and kind, teaching me Japanese, and I'm always grateful. When I first came to Japan, I was worried that I wouldn't be able to communicate, but thanks to the teachers, I have gradually become accustomed to life in Saga. Recently, I've also come to enjoy Japanese food and I'm having a great time living in Saga!



PUN
(Nepal)

The school teachers are kind and explain things in an easy-to-understand manner, making classes very interesting. Saga is a peaceful and beautiful town. The people in Saga are polite and friendly, making it easy to live here. The cost of living is also lower than in other cities, so I am satisfied with life in Saga.



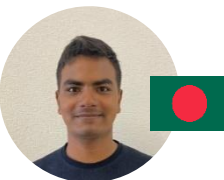
IRYNA
(Ukraine)

I've made many friends at school and I've become able to communicate with Japanese people at convenience stores and train stations. Japanese pronunciation is still challenging, but I'm enjoying studying the language. Saga doesn't have high prices, and there are many kind people, making it a very livable place.



LAKSHITHA
(Sri Lanka)

The teachers provide a solid support for our study abroad experience and teach Japanese effectively. Life at school is a wonderful experience that makes me feel personal growth. Saga is a quiet and beautiful city, allowing me to live happily. Moreover, Saga is an ideal place for learning Japanese.



ISLAM
(Bangladesh)

Life in Saga is comfortable, and the people of Saga are very kind. At first, I felt anxious in this unfamiliar environment, but with the support of the teachers, I've become accustomed to life here. Now, I've made many friends at school and every day is very enjoyable.

School Profile and History

School Profile

School Name	Saga Language Center
Location	Saga Balloon Museum 4F, Matsubara 2-2-27, Saga City, Saga Prefecture
School Establishment	April 2015
Capacity	225 students
Principal	Junko Kawahara More than 20 years of experience in Japanese language education. She has assisted many international students in their pursuit of higher education.
School History	April 2015 Human Academy Japanese Language School Saga campus was established. April 2022 School name changed to Saga Language Center (due to change in the installer)

Management Company Profile

Corporate Name	Japan Language CO., LTD
Head Office Location	Famil Nakajima Kouen 2F, Minami 11-jo Nishi 1-3-17, Chuo-ku, Sapporo, Hokkaido, Japan
Representative	Chairman and Executive Director : Yoshio Sato Representative Director and President : Mitsuhiro Mizuta

Application and Inquiries

Please feel free to contact us if you have any questions about courses, tuition, school life, etc.



Saga Language Center, Saga Balloon Museum 4F,
Matsubara 2-2-27, Saga City, Saga Prefecture, 840-0831

TEL: +81-952-27-7270 EMAIL: info-saga@japanlan.jp

							
Facebook	Instagram	YouTube	NAVER Blog	Weibo	小红书	Blog	TikTok